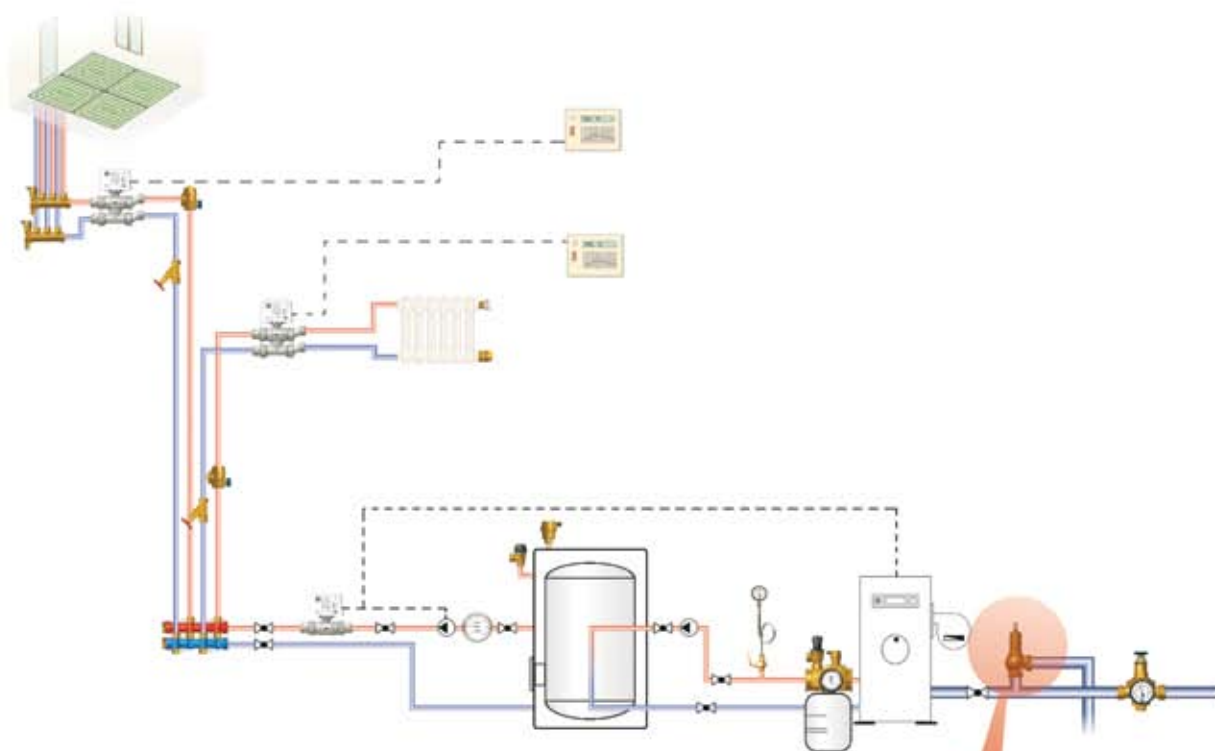
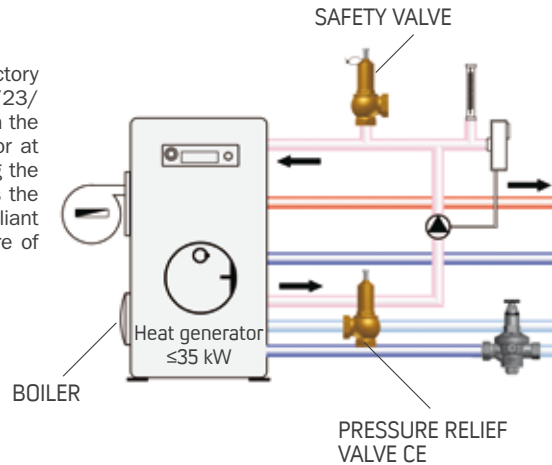


ADJUSTABLE PRESSURE RELIEF VALVES WITH FREE AND CONVEYED DISCHARGE

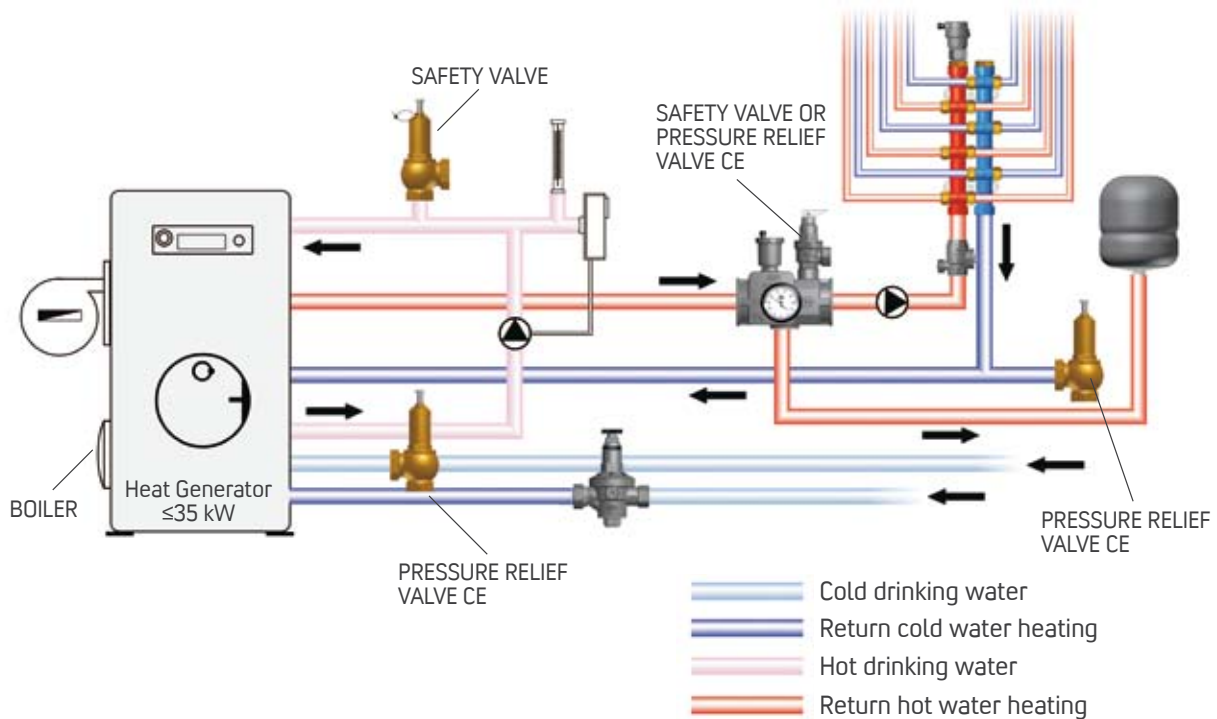


ADJUSTABLE PRESSURE RELIEF VALVES WITH FREE AND CONVEYED DISCHARGE

These preset pressure valves with conveyed and free discharge, factory preset and sealed, are certified in accordance with EU Directive 97/23/EC (PED) and constitute probably the most important safety device on the heat generator. These valves should be installed either on the top or at the outlet piping of the generator and are designed to open, releasing the water and/or steam through it, in case the working pressure reaches the maximum allowable working pressure (PS) of the generator. PED-compliant pressure safety valves automatically close when the internal pressure of the generator returns below the preset limit (P_{nr}) of the valve itself.



Thanks to the highly precise setting (up to ± 0.1 bar), to the variety of available seat gaskets (brass, rubber and PTFE) and to the different types (free or conveyed discharge), they can be used in several systems, also systems on compressed air and steam. Free and Conveyed discharge-type safety valves are factory set and sealed; responding to the requirements laid out in EU Directive 97/23/EC (PED) for pressure equipment, and are therefore classified as Category IV and bear CE 1115.



The adjustable pressure relief valves with conveyed and free discharge are certified in accordance with EU Directive 97/23/EC. These valves may be used to discharge pressure excesses from possible backpressures in heat generator water supply systems or as an auxiliary safety device on the outlet side for hot water (or on the return, as is always advisable), releasing pressure excesses resulting from rising temperatures in heat transfer fluids or following sudden pressure changes (provided that pressures are < PS). The numerous possibilities in regulating pressure, the available seat gaskets (brass, rubber and PTFE) and the different types (free or conveyed discharge) make these valves ideal for any type of facilities using water, gas and steam. Both the free and the conveyed discharge-type adjustable pressure relief valves meet the requirements set out in EU Directive 97/23/EC (PED) for pressure equipment, as Pressure Accessories. These are classified as Category I and bear the CE marking. However, these valve types are not designed for specific safety operation as defined under Article 1.2 of EU Directive 97/23/EC.